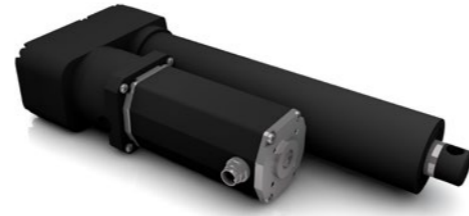


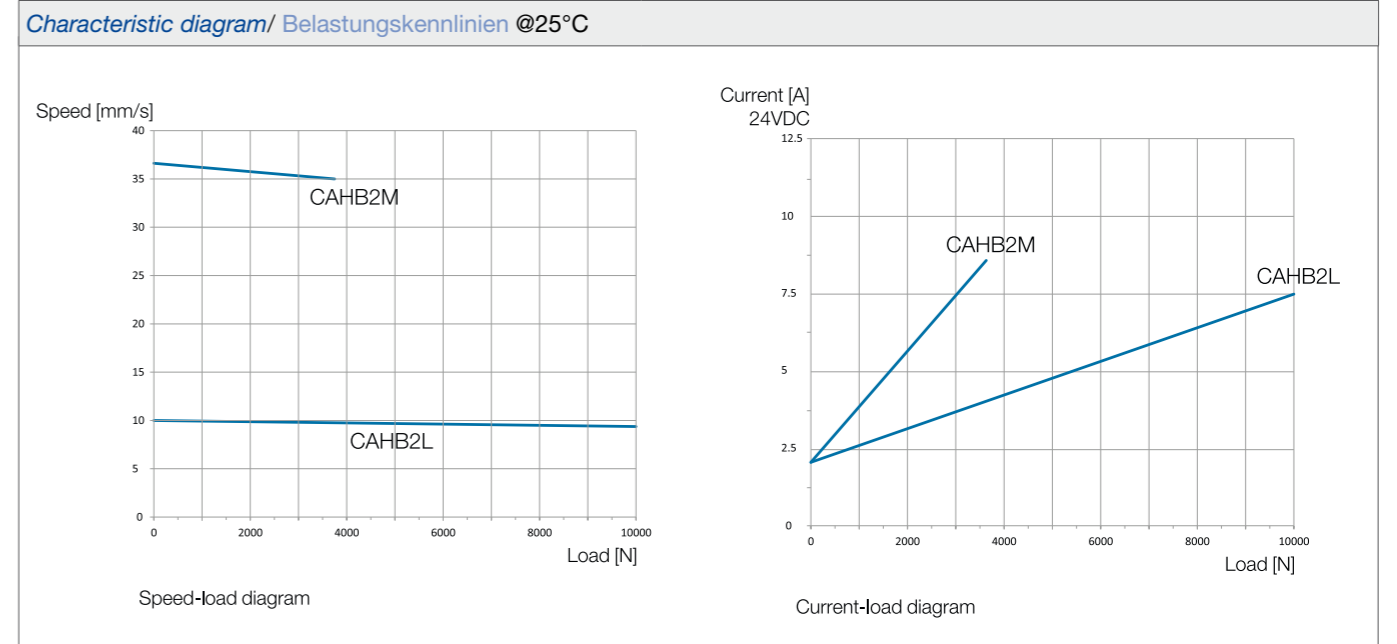
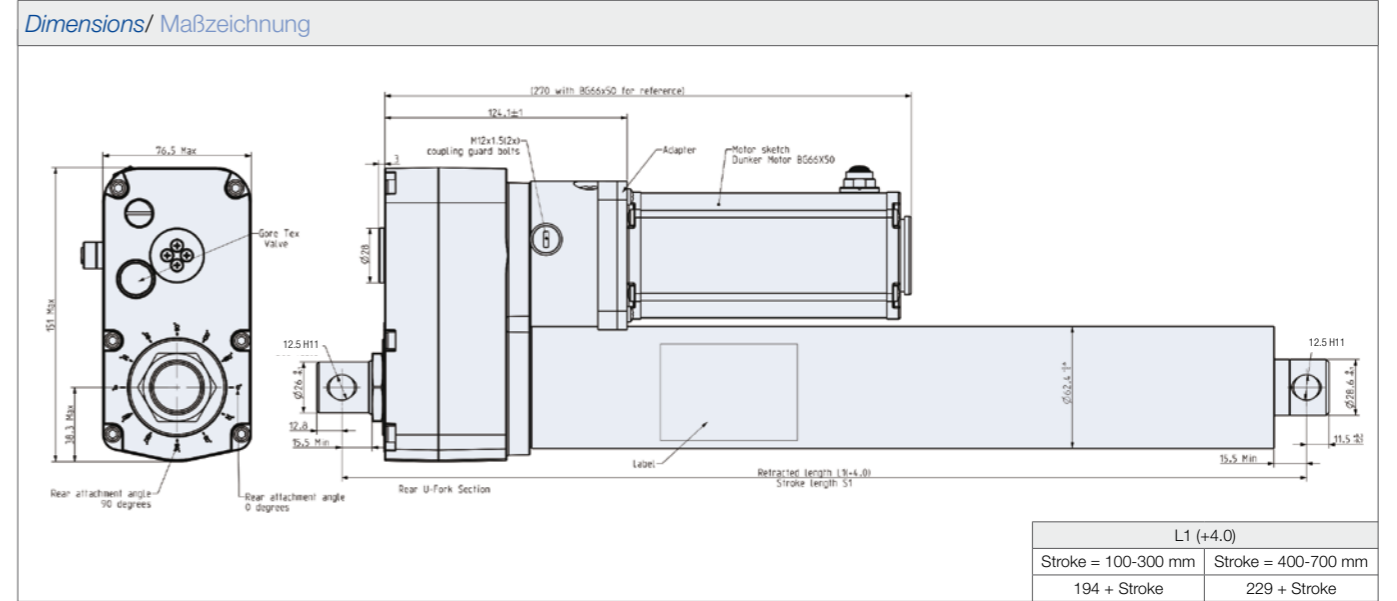
- » Robust, electric lifting cylinder with strokes of up to 700 mm
 - » With brushless DC-Servomotors BG 66 (on request also with GR 63 motor)
 - » Ball screw versions
 - » Integrated gear and brake
 - » Integrated Gore Tex membrane
 - » Parallel motor design
 - » Alternative to pneumatic/hydraulic cylinders
 - » Compact and space-saving
 - » Easy configuration of up to 14 positions (IO **dMove** motors)
 - » Various BUS interfaces available (CO, PN, EC, EI **dPro** motors)
- » Robuster, Elektrischer Hubzylinder mit Hüben von bis zu 700 mm
 - » Mit bürstenlosem DC-Servomotoren BG 66 (auf Anfrage auch mit GR 63 Motor)
 - » Kugelrollspindel Versionen
 - » Integriertes Getriebe und Bremse
 - » Integrierte Gore Tex Membrane
 - » Parallele Motorausführung
 - » Alternative zu Pneumatik/Hydraulik Zylinder
 - » Kompakt und platzsparend
 - » Einfache Konfiguration von bis zu 14 Positionen (IO **dMove** Motoren)
 - » Verschiedene BUS-Schnittstellen verfügbar (CO, PN, EC, EI **dPro** Motoren)



| | | | | | | | | | |
|-------------------------|---------------------------|---------------------------------|----------------------------|-------------------------|----------------------|---------------|-------------------------|----------------------|------------------|
| Service interface | CANopen version available | EtherCAT version available | Profinet version available | RS485 version available | Condition monitoring | Digital label | High/Premium efficiency | Lifetime lubrication | Low temperature |
| High force | IO mode | Oscilloscope software available | 30 cpr | 4096 cpr | Programmable | Positioning | Current mode | Self-locking | Protection class |
| Supply voltage versions | Analog inputs | Digital inputs | Digital outputs | Block commutation | Vibration resistance | | | | |

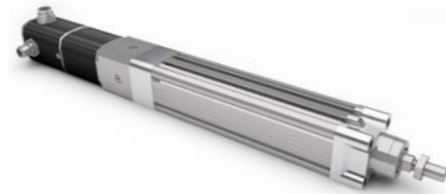
| Data/ Technische Daten | | CAHB2M | | CAHB2L | |
|---|------|---|----------------------|-----------------------|----------------------|
| Motor type/ Motortyp | | BG 66x50 dMove | BG 66x50 dPro | BG 66x50 dMove | BG 66x50 dPro |
| Nominal voltage/ Nennspannung | VDC | 24* | | | |
| Nominal current/ Nennstrom | A | 8.5 | | 7.5 | |
| No load current/ Leerlaufstrom | A | 2 | | 2 | |
| Constant force/ Dauerkraft | N | 3.500 | | 10.000 | |
| Max. traverse speed/ Max. Verfahrgeschwindigkeit | mm/s | 35 | | 9 | |
| Overload protection/ Überlastschutz | N | 4.900 | | 14.000 | |
| Gearbox reduction/ Getriebeuntersetzung | i | 15.0204 | | 25.8385 | |
| Spindle pitch/ Spindelsteigung | mm | 10 | | 5 | |
| Backlash/ Verdrehspiel | mm | 1.0 | | 0.6 | |
| Duty cycle (85s on, 340s off)/ Einschaltdauer (85s an, 340s aus) | % | 20 | | | |
| Ambient temperature/ Umgebungstemperatur | °C | -40 ...+85 | | | |
| Stroke length/ Hublängen | mm | 100 / 200 / 300 / 400 / 500** / 600** / 700** | | | |
| Salt spray test (ISO 9227:2017)/ Salzsprühtest (ISO 9227:2017) | h | 192 | | | |

* 12V oder 48V Version auf Anfrage/ On request 12V or 48V version ** Auf Anfrage/ On request



- » Electric cylinder with strokes up to 400 mm
- » With brushless DC servomotors
- » Lead and ball screw version
- » Twist protected thrust rod
- » In-line and parallel motor version
- » Alternative for pneumatic cylinder
- » Compact and space saving
- » Easy configuration of max. 14 positions (PI motor)
- » Several BUS interfaces available
- » PLG 42 on request

- » Elektrischer Hubzylinder mit Hube von bis zu 400 mm
- » Mit bürstenlosem DC-Servomotoren
- » Gleitspindel und Kugelrollspindel Versionen
- » Verdreh gesicherte Schubstange
- » In-Line und parallele Motorausführung
- » Alternative zu Pneumatik Zylinder
- » Kompakt und platzsparend
- » Einfache Konfiguration von bis zu 14 Positionen (PI Motor)
- » Verschiedene BUS-Schnittstellen verfügbar
- » Auf Anfrage mit PLG 42



IO mode

CANopen version available

Service interface

Force mode

Precise positioning

Maintenance free

High efficiency

Low noise

Self-locking ratios available

High force

High dynamic

Digital inputs

Digital outputs

Analog inputs

Feedback integrated

Oscilloscope software available

Condition monitoring

Programmable

Protection class (up to)

Supply voltage versions

Certification

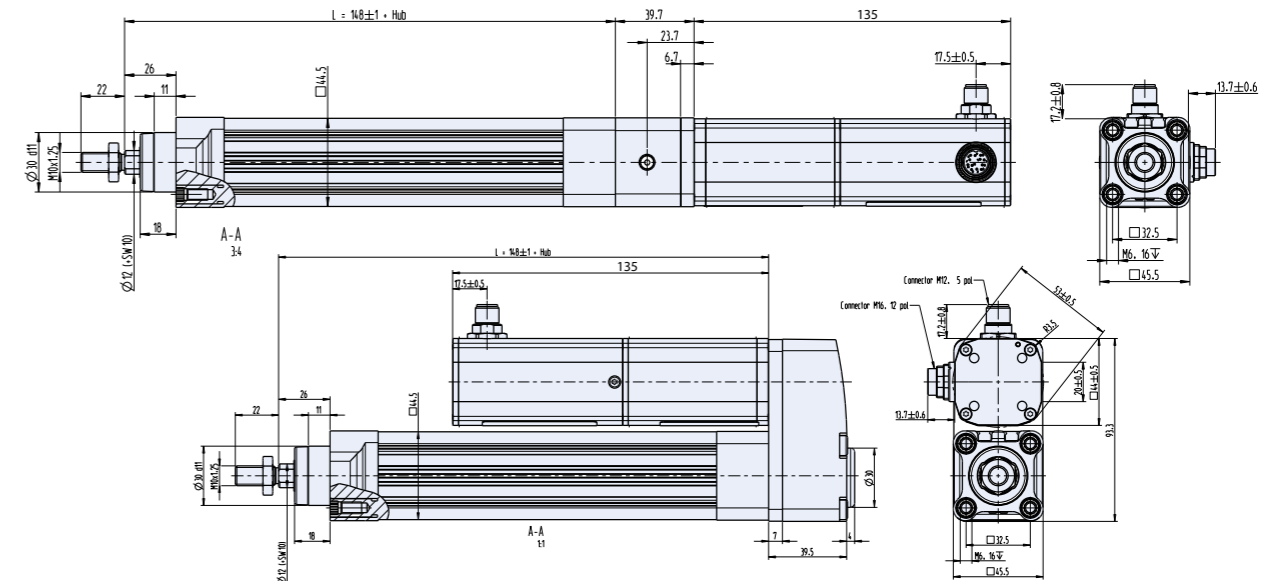
Certification

Vibration resistance

| Data/ Technische Daten | | CASM-32 | | |
|---|------------------|----------------------------------|----------------|-----|
| Motor type/ Motortyp | | BG 45x30 | | |
| Nominal voltage/ Nennspannung | VDC | 24 | | |
| Nominal current/ Nennstrom | A | 4.9 | | |
| Peak current (2 sec.)/ Spitzenstrom (2 sec.) | A | 15 | | |
| Spindle version/ Spindelversion | - | LS | BS | BN |
| Spindle pitch/ Spindelsteigung | mm | 1.5 | 3 | 10 |
| Constant force/ Dauerkraft | N | 300 | 327 | 131 |
| Peak force/ Spitzenkraft | N | 300 | 700 | 462 |
| Max. traverse speed/ Max. Verfahrensgeschwindigkeit | mm/s | 60 | 150 | 500 |
| Max. acceleration/ Max. Beschleunigung | m/s ² | 1 | 6 | |
| Repeatability/ Wiederholgenauigkeit | mm | +/- 0.07 | +/- 0.01 | |
| Lifetime L ₁₀ / Lebensdauer L ₁₀ | km | 70 | Siehe Diagramm | |
| Stroke length/ Hublängen | mm | 50 / 100 / 150 / 200 / 300 / 400 | | |

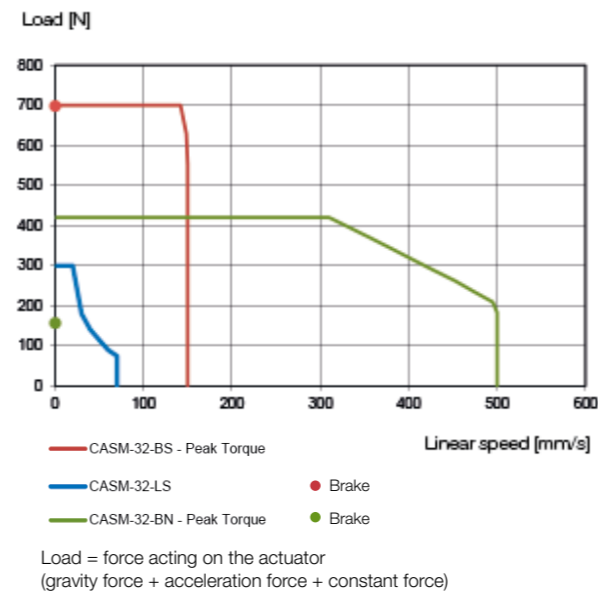
LS: Lead screw/ Gleitspindel Not applicable for motions on mechanical stop./ Nicht geeignet für Bewegungen auf mechanischem Anschlag.
BS / BN: Ball screw/ Kugelrollspindel

Dimensions/ Maßzeichnung

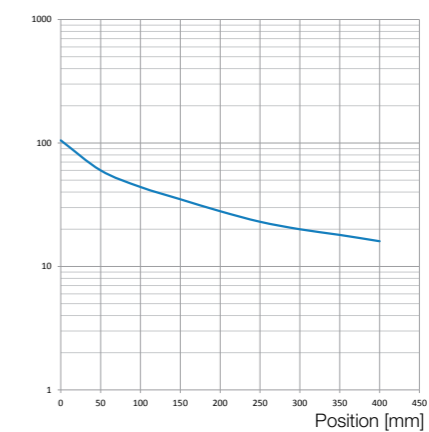


Characteristic diagram/ Belastungskennlinien @25°C

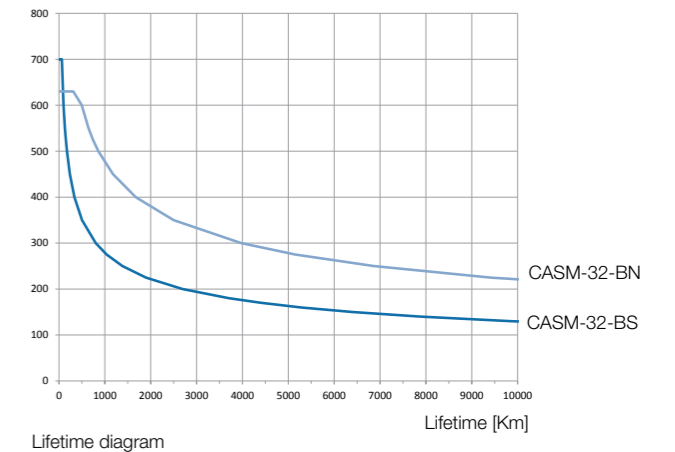
Load/ linear speed diagram



Shear load [N]



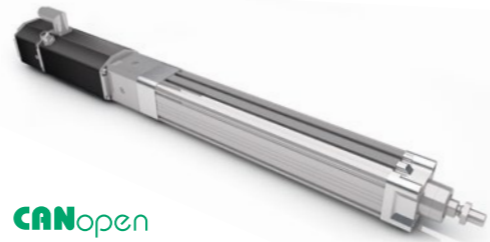
Shear load diagram
The shear load acts at right angles to the movement direction.
Nominal load [N]



Preferred series/ Vorzugsreihe Standard product/ Standardprodukt On request/ auf Anfrage See notes page 8/ Hinweise siehe S. 8

- » Electric cylinder with strokes up to 600 mm
- » With brushless DC servomotors
- » Lead and ball screw version
- » Twist protected thrust rod
- » In-line and parallel motor version
- » Alternative for pneumatic cylinder
- » Compact and space saving
- » Easy configuration of max. 14 positions (PI motor)
- » Several BUS interfaces available
- » PLG 52 on request

- » Elektrischer Hubzylinder mit Hube von bis zu 600 mm
- » Mit bürstenlosem DC-Servomotoren
- » Gleitspindel und Kugelrollspindel Versionen
- » Verdreh gesicherte Schubstange
- » In-Line und parallele Motorausführung
- » Alternative zu Pneumatik Zylinder
- » Kompakt und platzsparend
- » Einfache Konfiguration von bis zu 14 Positionen (PI Motor)
- » Verschiedene BUS-Schnittstellen verfügbar
- » Auf Anfrage mit PLG 52



IO mode

CANopen version available

Service interface

Force mode

Precise positioning

Maintenance free

High efficiency

Low noise

Self-locking ratios available

High force

High dynamic

Digital inputs

Digital outputs

Analog inputs

Feedback integrated

Oscilloscope software available

Condition monitoring

Programmable

Protection class (up to)

Supply voltage versions

Certification

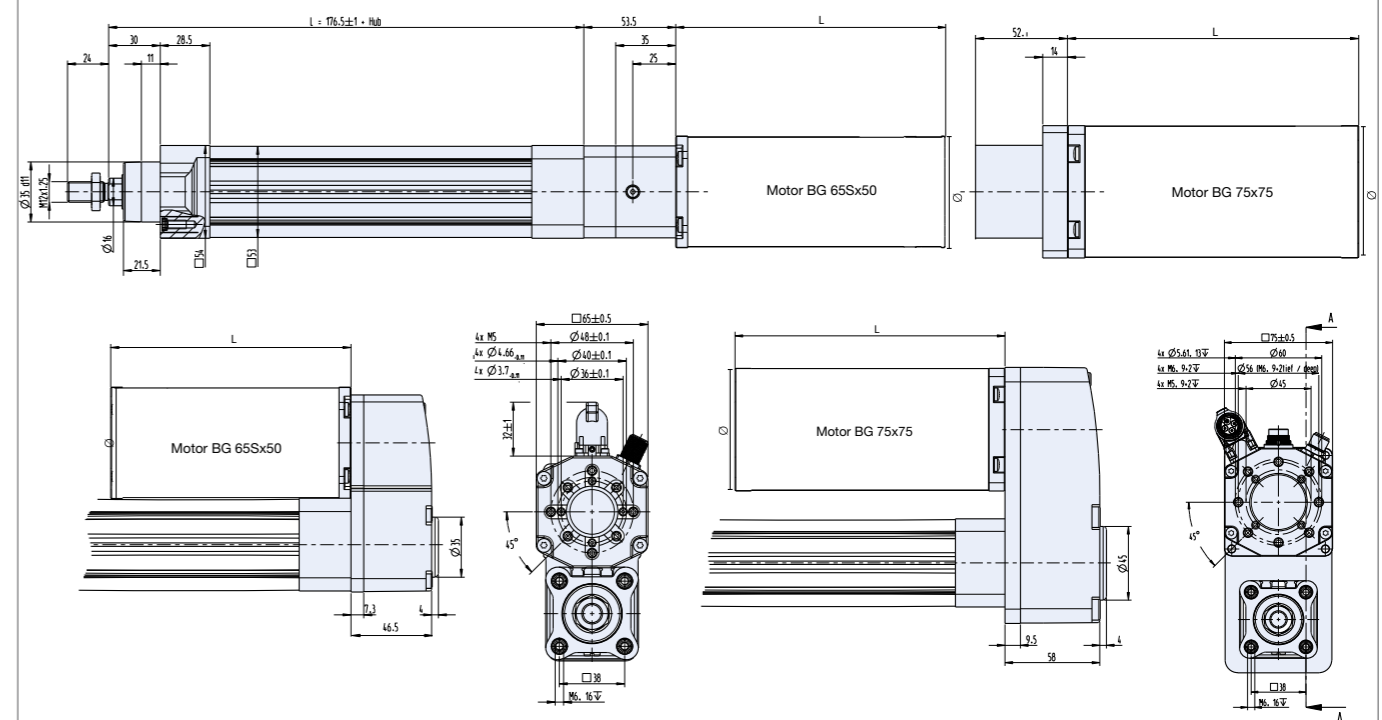
Certification

Vibration resistance

| Data/ Technische Daten | CASM-40 | | | | | | |
|---|------------------|-----------------------------------|----------------|------|----------|----------------|------|
| Motor type/ Motortyp | | BG 65Sx50 | | | BG 75x75 | | |
| Nominal voltage/ Nennspannung | VDC | 40-48 | | | 40-48 | | |
| Nominal current/ Nennstrom | A | 7 | | | 12.7 | | |
| Peak current (2 sec.)/ Spitzenstrom (2 sec.) | A | 20 | | | 50 | | |
| Spindle version/ Spindelversion | - | LS | BS | BN | LS | BS | BN |
| Spindle pitch/ Spindelsteigung | mm | 2.5 | 5 | 12.7 | 2.5 | 5 | 12.7 |
| Constant force/ Dauerkraft | N | 465 | 440 | 198 | 600 | 1020 | 459 |
| Peak force/ Spitzenkraft | N | 600 | 1170 | 526 | 600 | 2375 | 1484 |
| Max. traverse speed/ Max. Verfahrgeschwindigkeit | mm/s | 70 | 300 | 825 | 70 | 300 | 825 |
| Max. acceleration/ Max. Beschleunigung | m/s ² | 1 | 6 | | 1 | 6 | |
| Repeatability/ Wiederholgenauigkeit | mm | +/- 0.07 | +/- 0.01 | | +/- 0.07 | +/- 0.01 | |
| Lifetime L ₁₀ / Lebensdauer L ₁₀ | km | 100 | Siehe Diagramm | | 100 | Siehe Diagramm | |
| Stroke length/ Hublängen | mm | 100 / 200 / 300 / 400 / 500 / 600 | | | | | |

LS: Lead screw/ Gleitspindel Not applicable for motions on mechanical stop./ Nicht geeignet für Bewegungen auf mechanischem Anschlag.
BS / BN: Ball screw/ Kugelrollspindel

Dimensions/ Maßzeichnung

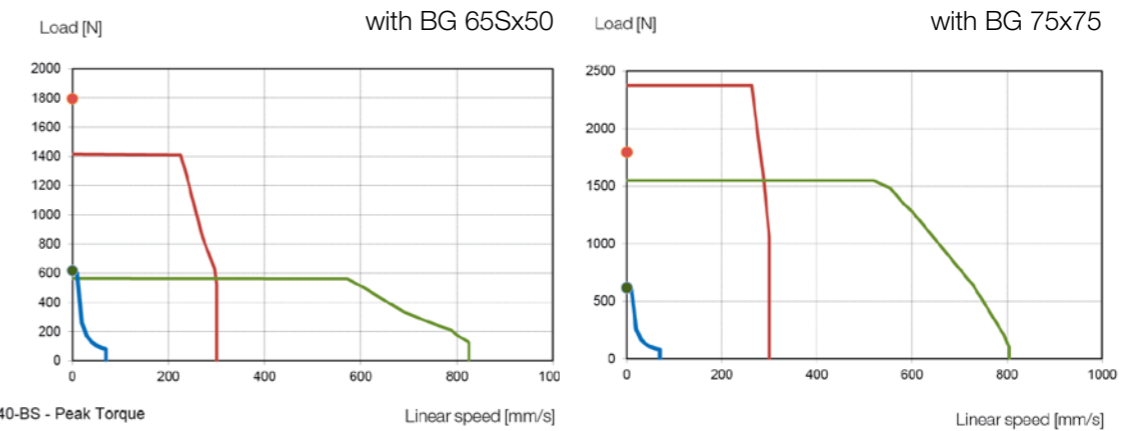


| | BG 65Sx50 | BG 75x75 |
|----------------------------|-----------|----------|
| Motor length/ Motorlänge L | mm 140 | mm 165 |
| Motor Ø/ Motor Ø | mm 65 | mm 75 |

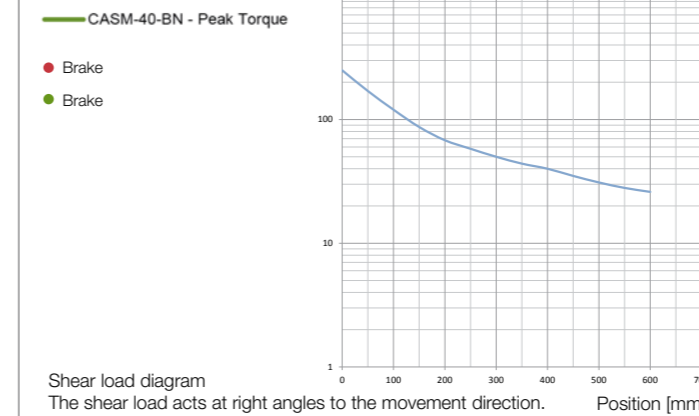
Characteristic diagram/ Belastungskennlinien @25°C

Load/ linear speed diagram

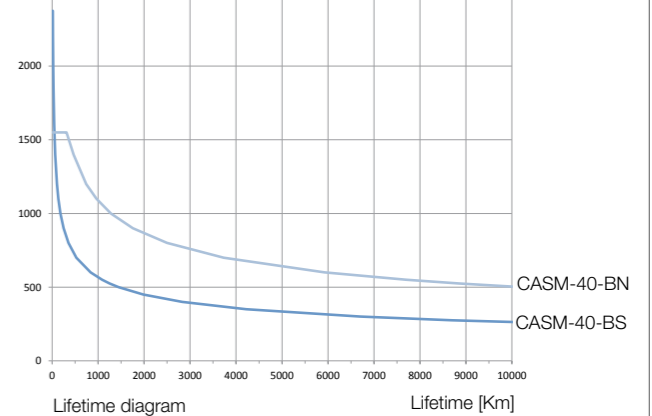
Load = force acting on the actuator (gravity force + acceleration force + constant force)



Shear load diagram



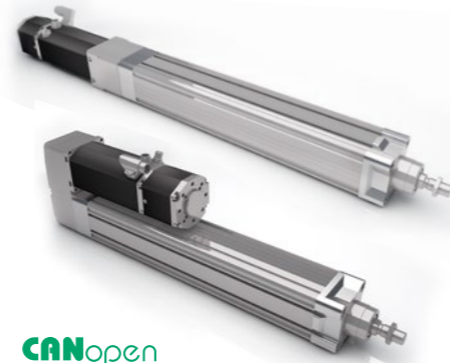
Nominal load diagram



Preferred series/ Vorzugsreihe Standard product/ Standardprodukt On request/ auf Anfrage See notes page 8/ Hinweise siehe S. 8

- » Electric cylinder with strokes up to 800 mm
- » With brushless DC servomotors
- » Lead and ball screw version
- » Twist protected thrust rod
- » In-line and parallel motor version
- » Alternative for pneumatic cylinder
- » Compact and space saving
- » Easy configuration of max. 14 positions (PI motor)
- » Several BUS interfaces available
- » PLG 63 on request

- » Elektrischer Hubzylinder mit Hube von bis zu 800 mm
- » Mit bürstenlosem DC-Servomotoren
- » Gleitspindel und Kugelrollspindel Versionen
- » Verdreh gesicherte Schubstange
- » In-Line und parallele Motorausführung
- » Alternative zu Pneumatik Zylinder
- » Kompakt und platzsparend
- » Einfache Konfiguration von bis zu 14 Positionen (PI Motor)
- » Verschiedene BUS-Schnittstellen verfügbar
- » Auf Anfrage mit PLG 63

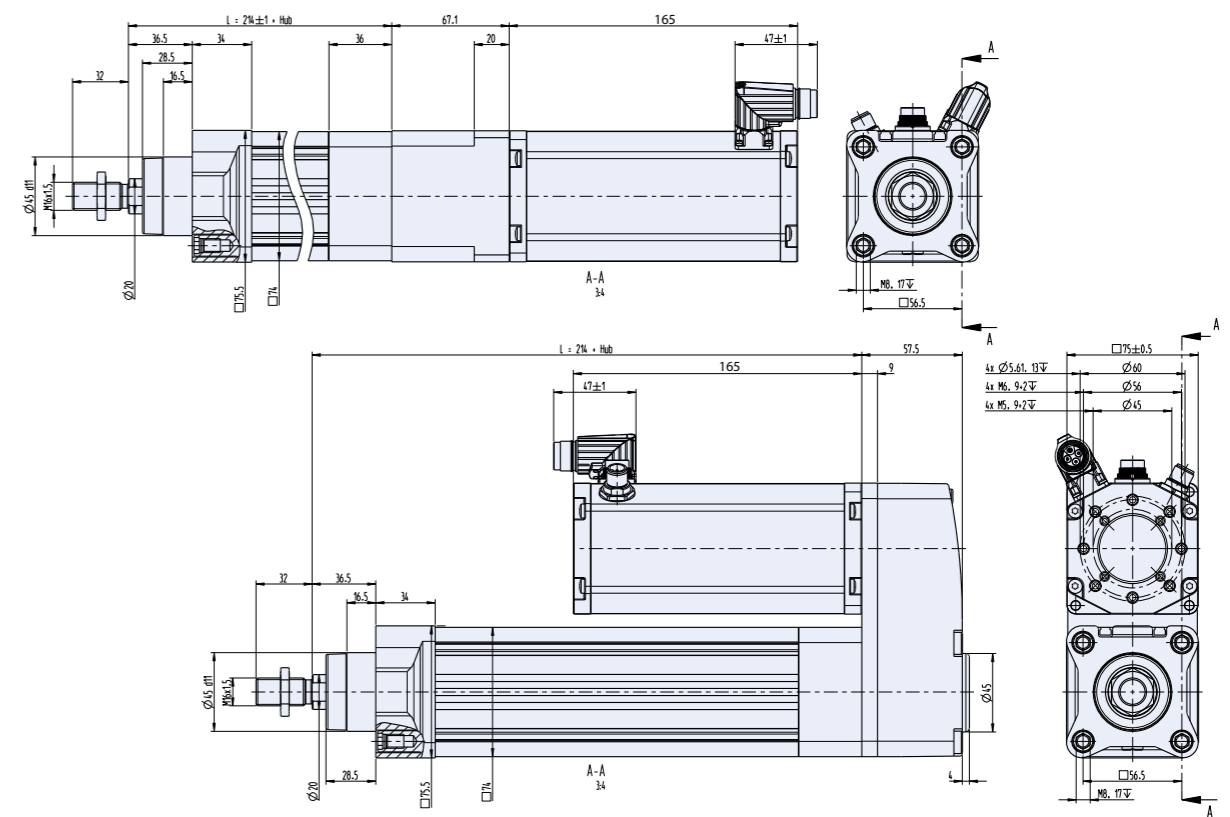


| | | | | | | | | | |
|---------------|---------------------------|----------------------|---------------|---------------------|---------------------------------|----------------------|--------------|-------------------------------|-------------------------|
| | | | | | | | | | |
| IO mode | CANopen version available | Service interface | Force mode | Precise positioning | Maintenance free | High efficiency | Low noise | Self-locking ratios available | High force |
| | | | | | | | | | |
| High dynamic | Digital inputs | Digital outputs | Analog inputs | Feedback integrated | Oscilloscope software available | Condition monitoring | Programmable | Protection class (up to) | Supply voltage versions |
| | | | | | | | | | |
| Certification | Certification | Vibration resistance | | | | | | | |

| Data/ Technische Daten | | CASM-63 | | |
|--|------------------|-----------------------------------|----------------|------|
| Motor type/ Motortyp | | BG 75x75 | | |
| Nominal voltage/ Nennspannung | VDC | 40-48 | | |
| Nominal current/ Nennstrom | A | 12.7 | | |
| Peak current (2 sec.)/ Spitzenstrom (2 sec.) | A | 50 | | |
| Spindle version/ Spindelversion | - | LS | BN | BF |
| Spindle pitch/ Spindelsteigung | mm | 4 | 10 | 20 |
| Constant force/ Dauerkraft | N | 692 | 583 | 292 |
| Peak force/ Spitzenkraft | N | 1000 | 1885 | 942 |
| Max. traverse speed/ Max. Verfahrgeschwindigkeit | mm/s | 70 | 530 | 1060 |
| Max. acceleration/ Max. Beschleunigung | m/s ² | 1 | 6 | |
| Repeatability/ Wiederholgenauigkeit | mm | +/- 0.07 | +/- 0.01 | |
| Lifetime L ₁₀ / Lebensdauer L ₁₀ | km | 100 | Siehe Diagramm | |
| Stroke length/ Hublängen | mm | 100 / 200 / 300 / 400 / 500 / 800 | | |

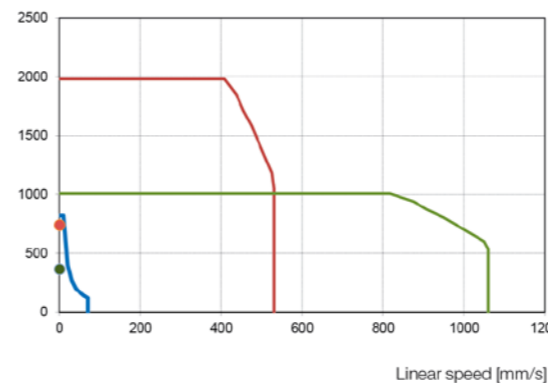
LS: Lead screw/ Gleitspindel *Not applicable for motions on mechanical stop./ Nicht geeignet für Bewegungen auf mechanischem Anschlag.*
 BF / BN: Ball screw/ Kugelrollspindel

Dimensions/ Maßzeichnung



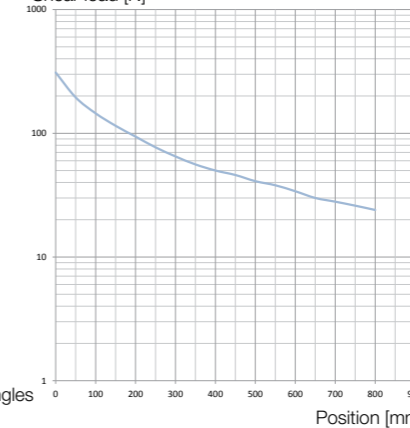
Characteristic diagram/ Belastungskennlinien @25°C

Load [N] Load/ linear speed diagram



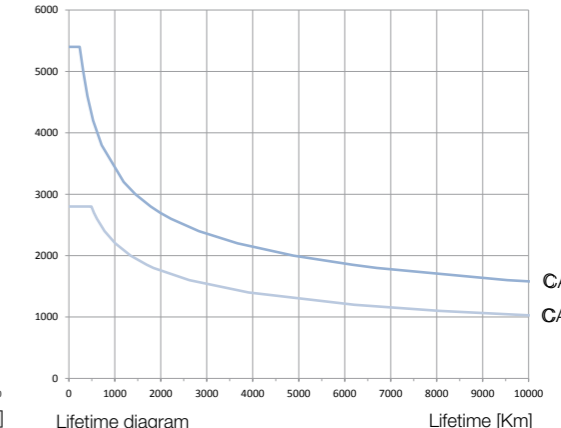
Load = force acting on the actuator (gravity force + acceleration force + constant force)

Shear load [N]



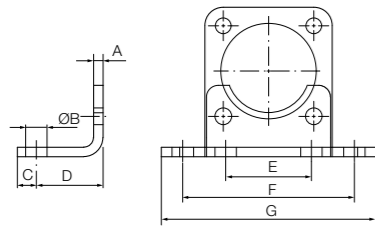
Shear load diagram
The shear load acts at right angles to the movement direction.

Nominal load [N]



Preferred series/ Vorzugsreihe Standard product/ Standardprodukt On request/ auf Anfrage See notes page 8/ Hinweise siehe S. 8

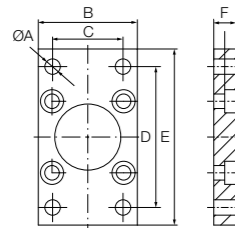
Foot mounting kit (for parallel version)/ Fussmontagesatz (für Parallel Version)



*Screws included

| | SNR | A | B | C | D | E | F | G |
|------------------|-------------|---|---|----|----|----|----|-----|
| CASM-32 | 28700.33321 | 4 | 7 | 11 | 24 | 32 | 58 | 71 |
| CASM-40 (BG 65S) | 28700.33401 | 4 | 9 | 8 | 28 | 36 | 72 | 90 |
| CASM-63 | 28700.33631 | 5 | 9 | 13 | 32 | 50 | 92 | 110 |

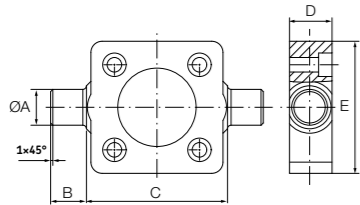
Flange mounting kit/ Flanschbefestigung



*Screws included

| | SNR | A | B | C | D | E | F |
|---------|-------------|---|----|----|-----|-----|----|
| CASM-32 | 28700.33322 | 7 | 45 | 32 | 64 | 80 | 10 |
| CASM-40 | 28700.33402 | 9 | 52 | 36 | 72 | 90 | 10 |
| CASM-63 | 28700.33632 | 9 | 75 | 50 | 100 | 120 | 12 |

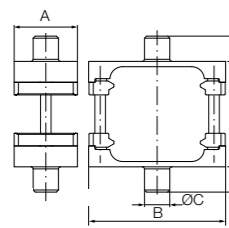
Trunnion flange kit/ Schwenkzapfenflansch



*Screws included

| | SNR | A | B | C | D | E |
|---------|-------------|----|----|----|----|----|
| CASM-32 | 28700.33323 | 12 | 12 | 50 | 14 | 46 |
| CASM-40 | 28700.33403 | 16 | 16 | 63 | 19 | 59 |
| CASM-63 | 28700.33633 | 20 | 20 | 90 | 24 | 84 |

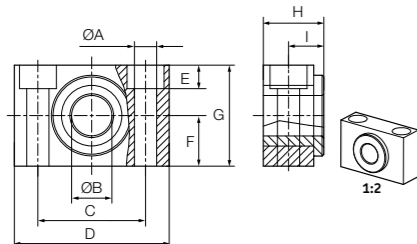
Trunnion mounting kit/ Schwenkzapfen



*Screws included

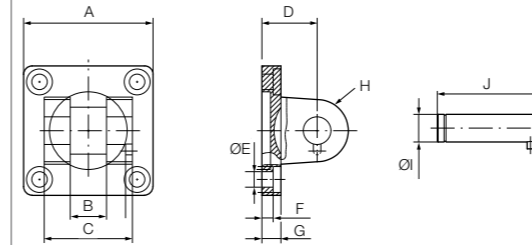
| | SNR | A | B | C | D | E | F |
|---------|-------------|----|-----|----|----|----|----|
| CASM-32 | 28700.33324 | 30 | 65 | 12 | 12 | 50 | 12 |
| CASM-40 | 28700.33404 | 32 | 75 | 16 | 16 | 63 | 16 |
| CASM-63 | 28700.33634 | 41 | 105 | 20 | 20 | 90 | 20 |

Trunnion support kit/ Lagerblöcke (Paar)



| | SNR | A | B | C | D | E | F | G | H | I |
|---------|-------------|-----|----|----|----|-----|----|----|----|------|
| CASM-32 | 28700.33325 | 6.6 | 12 | 32 | 46 | 6.8 | 15 | 30 | 18 | 10.5 |
| CASM-40 | 28700.33405 | 9 | 16 | 36 | 55 | 9 | 18 | 36 | 21 | 12 |
| CASM-63 | 28700.33635 | 11 | 20 | 42 | 65 | 11 | 20 | 40 | 23 | 13 |

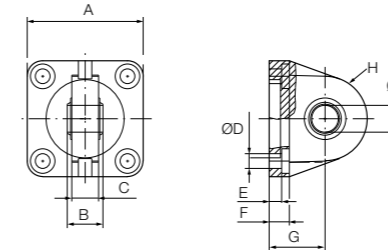
Swivel flange (for parallel version)/ Gabelbefestigung (für Parallel Version)



*Screws included

| | SNR | A | B | C | D | E | F | G | H | I | J |
|------------------|-------------|----|----|----|----|-----|-----|----|----|----|----|
| CASM-32 | 28700.33326 | 45 | 14 | 34 | 22 | 6.6 | 5.5 | 9 | 10 | 10 | 41 |
| CASM-40 (BG 65S) | 28700.33406 | 52 | 16 | 40 | 25 | 6.6 | 5.5 | 9 | 12 | 12 | 48 |
| CASM-40 (BG 75) | 28700.33636 | 75 | 21 | 51 | 32 | 9 | 6.5 | 11 | 18 | 16 | 60 |
| CASM-63 | 28700.33636 | 75 | 21 | 51 | 32 | 9 | 6.5 | 11 | 18 | 16 | 60 |

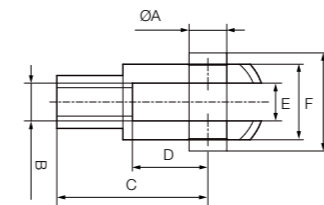
Swivel flange with rod eye (for parallel version)/ Gelenklager (für Parallel Version)



*Screws included

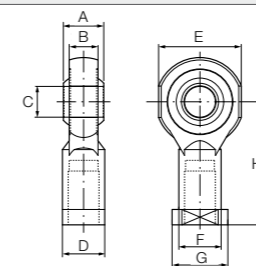
| | SNR | A | B | C | D | E | F | G | H | I |
|------------------|-------------|----|----|------|-----|-----|----|----|----|----|
| CASM-32 | 28700.33327 | 45 | 14 | 10.5 | 6.6 | 5.5 | 9 | 22 | 16 | 10 |
| CASM-40 (BG 65S) | 28700.33407 | 52 | 16 | 12 | 6.6 | 5.5 | 9 | 25 | 19 | 12 |
| CASM-40 (BG 75) | 28700.33637 | 75 | 21 | 15 | 9 | 6.5 | 11 | 32 | 24 | 16 |
| CASM-63 | 28700.33637 | 75 | 21 | 15 | 9 | 6.5 | 11 | 32 | 24 | 16 |

Rod clevis/ Gabelkopf



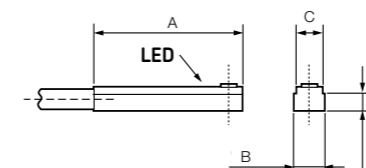
| | SNR | A | B | C | D | E | F | G |
|---------|-------------|----|----------|----|----|----|----|------|
| CASM-32 | 28700.33328 | 10 | M10x1.25 | 40 | 20 | 10 | 20 | 28 |
| CASM-40 | 28700.33408 | 12 | M12x1.25 | 48 | 24 | 12 | 24 | 32 |
| CASM-63 | 28700.33638 | 16 | M16x1.5 | 64 | 32 | 16 | 32 | 41.5 |

Rod eye/ Gelenkkopf



| | SNR | A | B | C | D | E | F | G | H |
|---------|-------------|----|------|----|----|----|------|----|----|
| CASM-32 | 28700.33329 | 14 | 10.5 | 10 | 17 | 29 | 15 | 20 | 43 |
| CASM-40 | 28700.33409 | 16 | 12 | 12 | 19 | 33 | 17.5 | 23 | 50 |
| CASM-63 | 28700.33639 | 21 | 15 | 16 | 22 | 43 | 22 | 29 | 64 |

Proximity sensor/ Näherungsschalter



Switching function/ Schaltfunktion: Normally open
Output signal/ Ausgangssignal: PNP
Rated voltage/ Nennspannung: 24 VDC
Max. current/ Max. Strom: 30 mA
Cable length/ Kabellänge: 5 m

| | SNR | A | B | C | D |
|---------|-------------|----|-----|---|------|
| CASM-32 | 28700.33320 | 29 | 6.2 | 5 | 3.15 |
| CASM-40 | 28700.33320 | 29 | 6.2 | 5 | 3.15 |
| CASM-63 | 28700.33320 | 29 | 6.2 | 5 | 3.15 |